

RPL13 Antibody (monoclonal) (M01)**Mouse monoclonal antibody raised against a partial recombinant RPL13.****Catalog # AT3702a****Specification**

RPL13 Antibody (monoclonal) (M01) - Product Information

Application	WB, IF, E
Primary Accession	P26373
Other Accession	NM_000977
Reactivity	Human
Host	mouse
Clonality	Monoclonal
Isotype	IgG2a Kappa
Calculated MW	24261

RPL13 Antibody (monoclonal) (M01) - Additional Information**Gene ID** 6137**Other Names**

60S ribosomal protein L13, Breast basic conserved protein 1, RPL13, BBC1

Target/Specificity

RPL13 (NP_000968, 112 a.a. ~ 211 a.a) partial recombinant protein with GST tag. MW of the GST tag alone is 26 KDa.

Dilution

WB~~1:500~1000

IF~~1:50~200

E~~N/A

Format

Clear, colorless solution in phosphate buffered saline, pH 7.2 .

Storage

Store at -20°C or lower. Aliquot to avoid repeated freezing and thawing.

Precautions

RPL13 Antibody (monoclonal) (M01) is for research use only and not for use in diagnostic or therapeutic procedures.

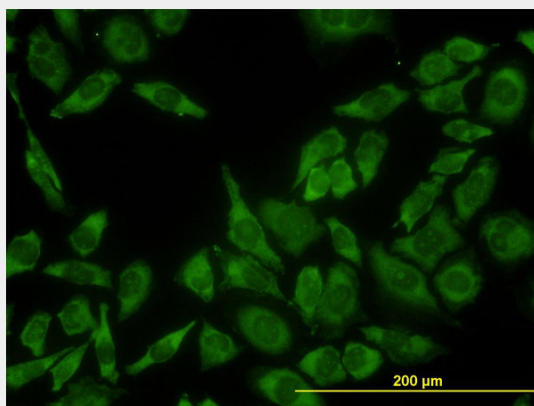
RPL13 Antibody (monoclonal) (M01) - Protocols

Provided below are standard protocols that you may find useful for product applications.

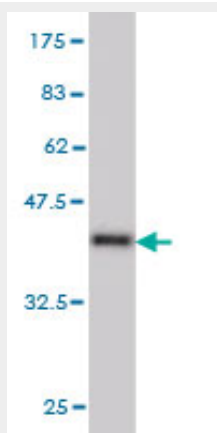
- [Western Blot](#)
- [Blocking Peptides](#)

- [Dot Blot](#)
- [Immunohistochemistry](#)
- [Immunofluorescence](#)
- [Immunoprecipitation](#)
- [Flow Cytometry](#)
- [Cell Culture](#)

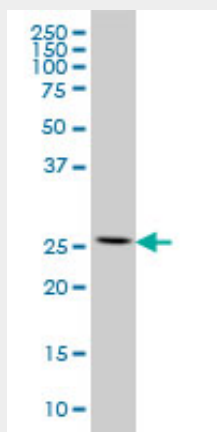
RPL13 Antibody (monoclonal) (M01) - Images



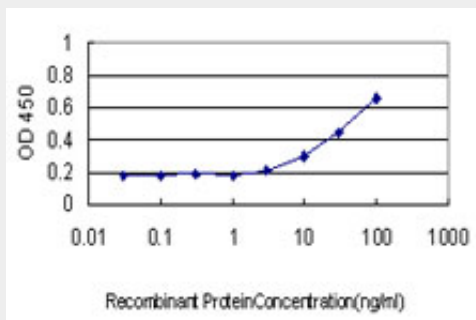
Immunofluorescence of monoclonal antibody to RPL13 on HeLa cell. [antibody concentration 10 ug/ml]



Antibody Reactive Against Recombinant Protein. Western Blot detection against Immunogen (36.74 KDa) .



RPL13 monoclonal antibody (M01), clone 3F6 Western Blot analysis of RPL13 expression in HeLa (Cat # AT3702a)



Detection limit for recombinant GST tagged RPL13 is approximately 3ng/ml as a capture antibody.

RPL13 Antibody (monoclonal) (M01) - Background

Ribosomes, the organelles that catalyze protein synthesis, consist of a small 40S subunit and a large 60S subunit. Together these subunits are composed of 4 RNA species and approximately 80 structurally distinct proteins. This gene encodes a ribosomal protein that is a component of the 60S subunit. The protein belongs to the L13E family of ribosomal proteins. It is located in the cytoplasm. This gene is expressed at significantly higher levels in benign breast lesions than in breast carcinomas. Transcript variants derived from alternative splicing and/or alternative polyadenylation exist; these variants encode the same protein. As is typical for genes encoding ribosomal proteins, there are multiple processed pseudogenes of this gene dispersed through the genome.

RPL13 Antibody (monoclonal) (M01) - References

Alterations in oligodendrocyte proteins, calcium homeostasis and new potential markers in schizophrenia anterior temporal lobe are revealed by shotgun proteome analysis. Martins-de-Souza D, et al. J Neural Transm, 2009 Mar. PMID 19034380. Systematic identification of SH3 domain-mediated human protein-protein interactions by peptide array target screening. Wu C, et al. Proteomics, 2007 Jun. PMID 17474147. Activation of the ribosomal protein L13 gene in human gastrointestinal cancer. Kobayashi T, et al. Int J Mol Med, 2006 Jul. PMID 16786168. Nucleolar proteome dynamics. Andersen JS, et al. Nature, 2005 Jan 6. PMID 15635413. The status, quality, and expansion of the NIH full-length cDNA project: the Mammalian Gene Collection (MGC). Gerhard DS, et al. Genome Res, 2004 Oct. PMID 15489334.